

crisistrivia  
hotseat

BRANDON WILL COX



Director of Peer Support Line,  
Rocky Mountain Crisis Partners



“We’re not going to see real change in this country until \_\_\_\_\_ is funded, trained, staffed and supervised, like other first responders” Sr. Lt. Allen Herring, New Castle County, Delaware Police Department.

Yesterday’s BJA/CSG “988 Forecaster” event focused on the voice and perspective of law enforcement. What did Lt. Herring call out as most transformative?

**A:** 988 Crisis Contact Centers (Call/Text/Chat)

**B:** Community-based Mobile Crisis

**C:** Crisis Receiving/Stabilization Centers

**D:** Full Continuum Core Crisis Care (All Three)

crisistrivia  
hotseat

BRANDON WILL COX



Director of Peer  
Support Line,  
Rocky Mountain  
Crisis Partners



**Where the rubber hits the road. 911 culture is to dispatch “fire, police or EMS.” Without scaled mobile crisis, law enforcement is often faced with the prospect of hours in a hospital ER for someone who needed care, not police.**

Yesterday’s BJA/CSG “988 Forecaster” event focused on the voice and perspective of law enforcement. What did Lt. Herring call out as most transformative?

**A: 988 Crisis Contact Centers (Call/Text/Chat)**

**B: Community-based Mobile Crisis**

**C: Crisis Receiving/Stabilization Centers**

**D: Full Continuum Core Crisis Care (All Three)**

**988**  
SUICIDE  
& CRISIS  
LIFELINE

**SAMHSA**  
Substance Abuse and Mental Health  
Services Administration

**NASMHPD**

# Crisis JAM SESSION

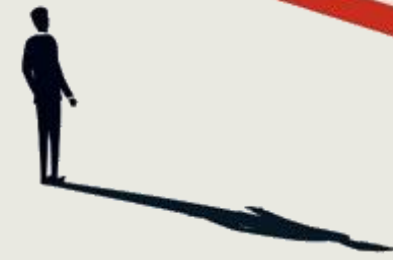


**SMI** Adviser

**JANUARY 25<sup>th</sup>, 2023**



CEO  
**NowMatters  
Now**



**TALK.CRISISNOW.COM**

**The  
Challenge**  
*Care that feels like care*