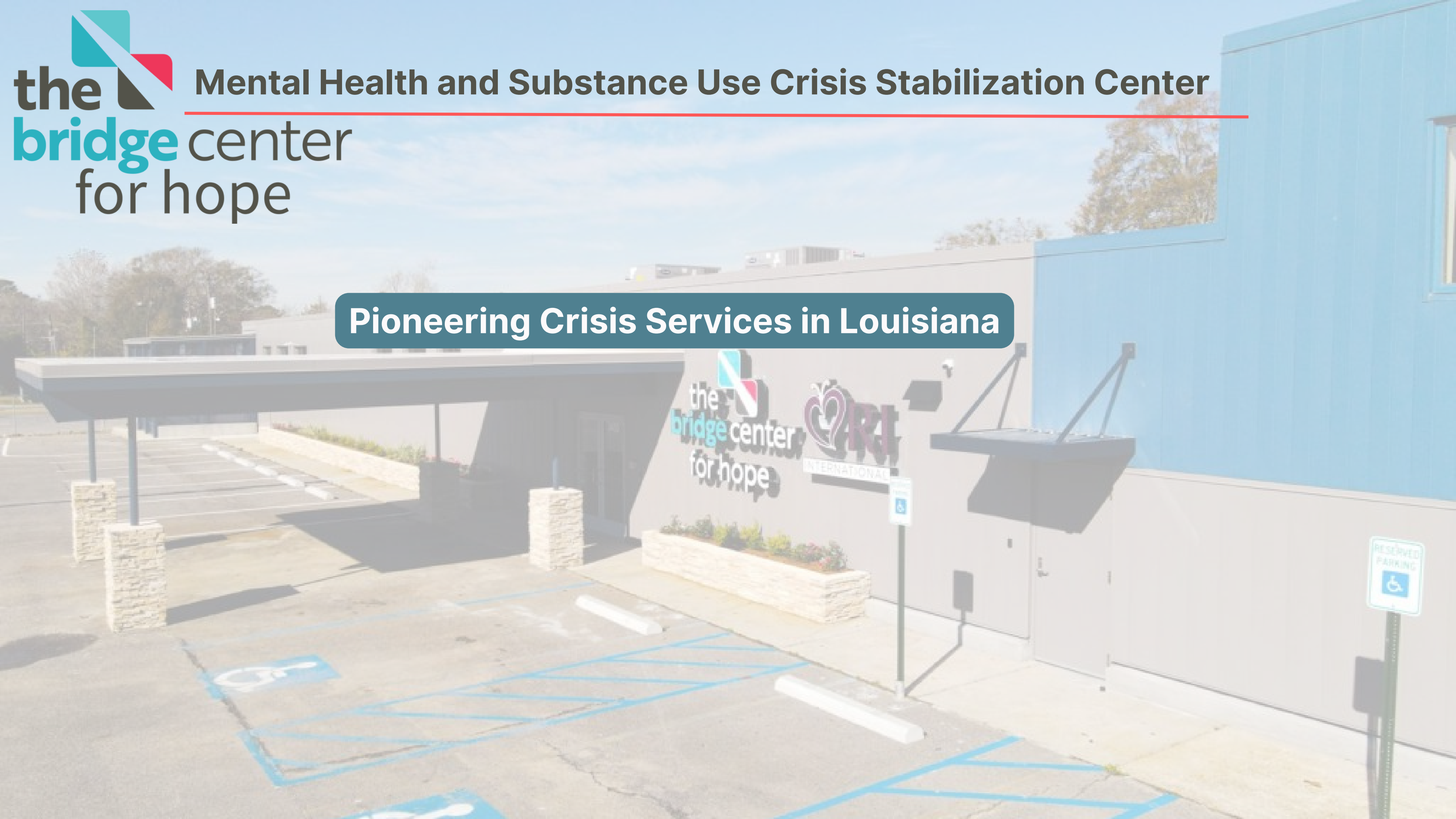




**Pioneering Crisis Services in Louisiana**





# HISTORY







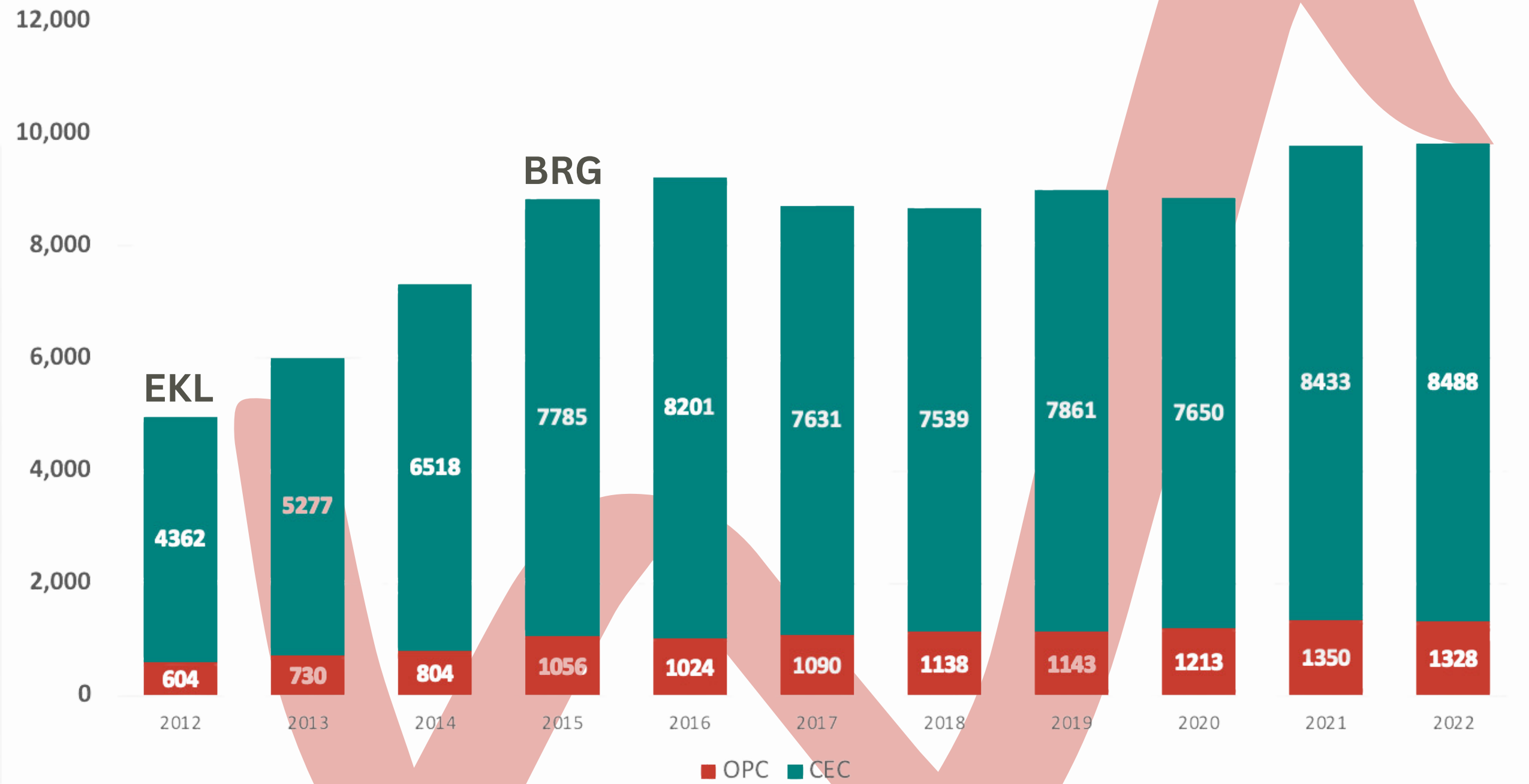
**Earl K. Long 2013**



**Baton Rouge General, ER 2015**

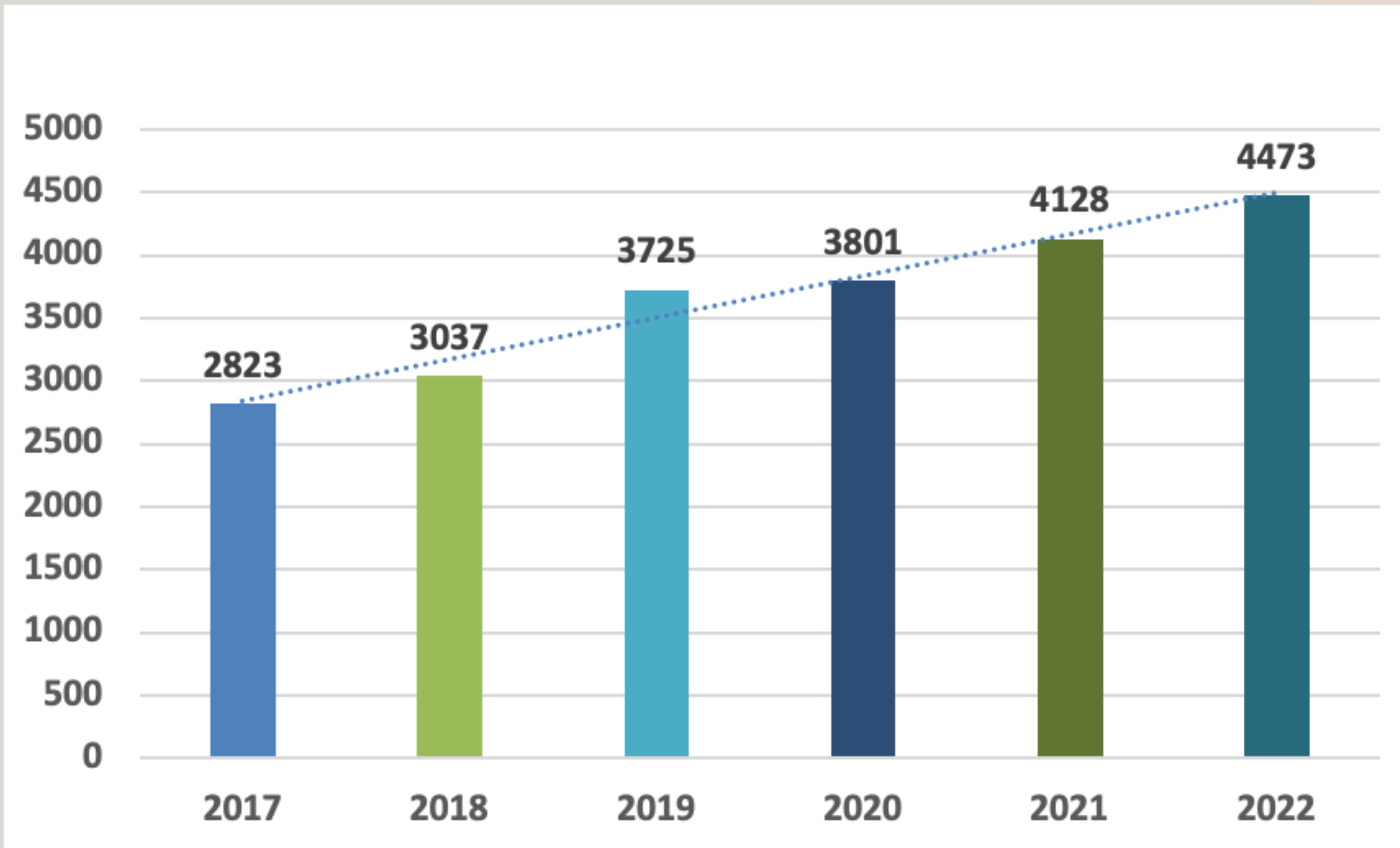


# OPC- Order of Protective Custody CEC- Coroner Emergency Certificate





# The number of **EDP** calls to law enforcement increased







**Develop a crisis stabilization center to:**

- **Combat this rising population,**
- **Create a safety net to catch people in crisis.**

- **Divert people from going to overcrowded emergency rooms,**
- **At as an alternative to local parish prisons.**





# The Bridge Center for Hope



# 23-hour Observation Unit





# Crisis Stabilization Unit





# Care Management or Mobile Response Unit

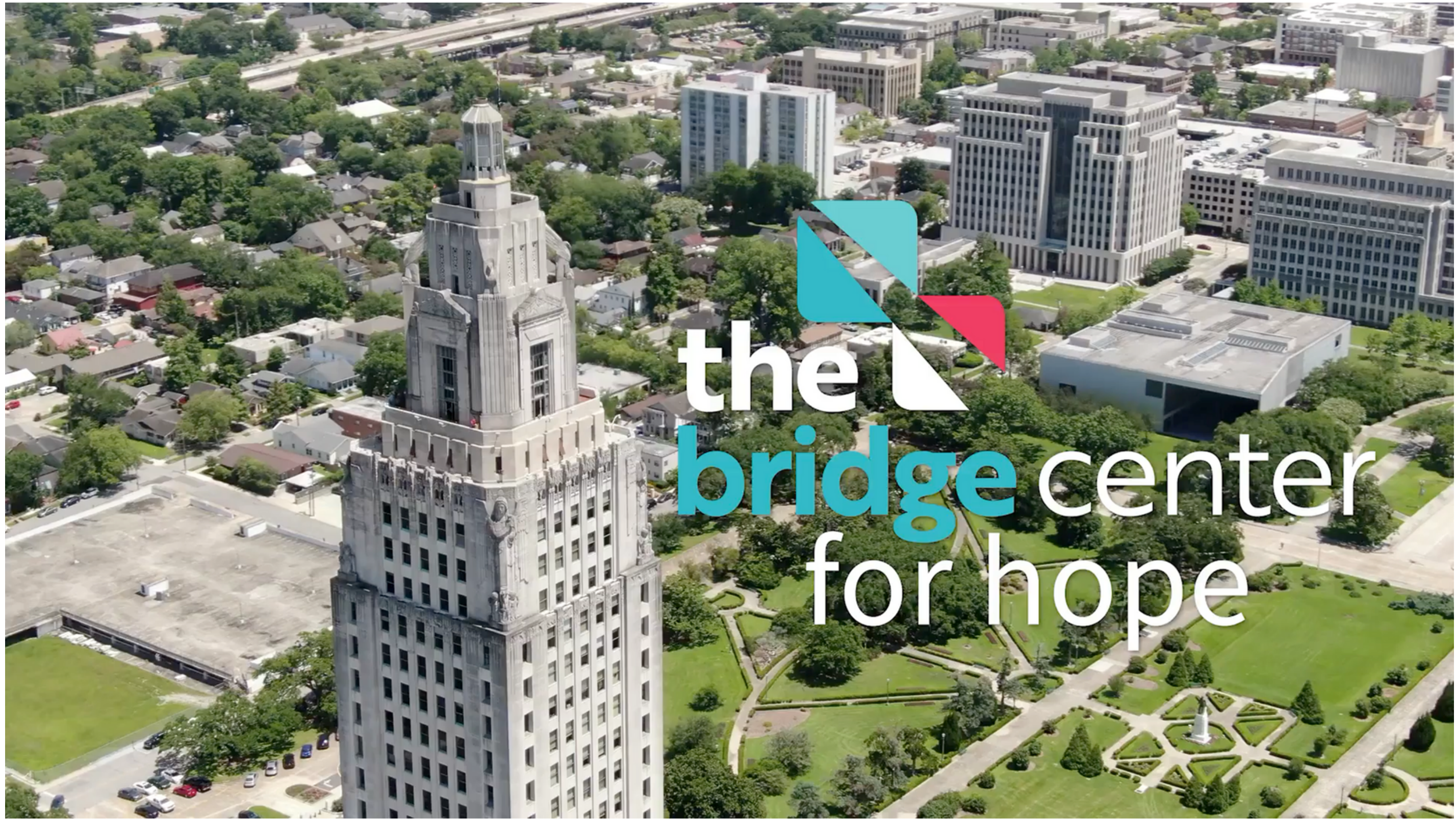




How are you doing?







the  
bridge center  
for hope





**the**  
**bridge** center  
for hope



[brbridge.org](http://brbridge.org)



[info@brbridge.org](mailto:info@brbridge.org)



3455 Florida Street



225-256-6604

**FOLLOW US** 

