

Connected and Strong

Strategies for Accessible and Effective Crisis and Mental Health Services

Debra A. Pinals, MD

Senior Medical and Forensic Advisor and Editor-in-Chief, and Former Chair, Medical Directors Division, National Association of State Mental Health Program Directors; Adjunct Clinical Professor of Psychiatry, Director, Program in Psychiatry, Law and Ethics, University of Michigan; Medical Director, Behavioral Health and Forensic Programs, Michigan Department of Health and Human Services

Genna B. Schofield, MPH

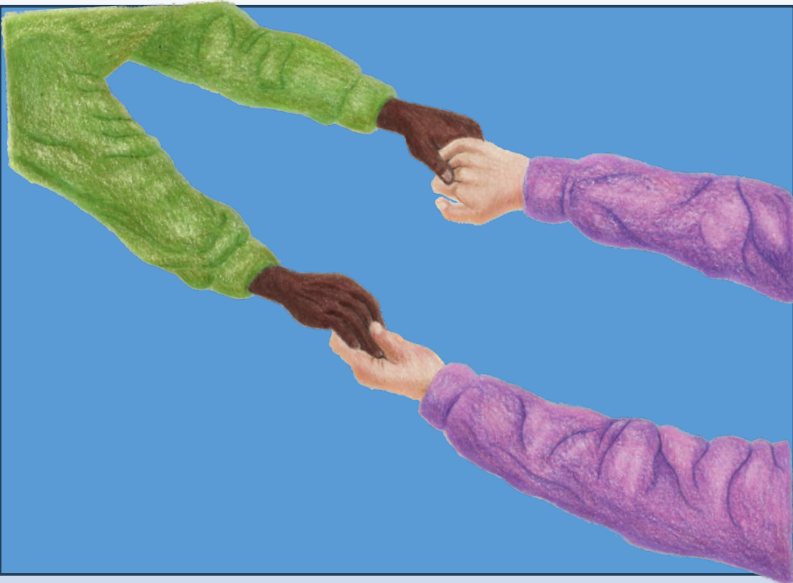
Senior Technical Assistance and Communications Specialist, National Association of State Mental Health Program Directors



Connected and Strong: Strategies for Accessible and Effective Crisis and Mental Health Services

2023 Ten Technical Assistance Papers:

1. Unity Agenda and Connected and Strong Services
2. Peer Support across the Crisis Continuum
3. Growing and Strengthening BH Workforce
4. Medical Approaches to Mental Health and Substance Use Crisis Encounters
5. Innovative Uses of Technology to Enhance Access to Services within the Crisis Continuum
6. 988 and 911 Interoperability: Leveraging Strengths and Opportunity
7. Facilitating Rapid Access to Outpatient Mental Health and Substance Use Care
8. **Increasing Equitable Access to Care for Co-Occurring Mental Health and Substance Use Disorders**
9. Intersectionality: Faith, Mental Health, and Community Partnerships
10. Long COVID and Vulnerable Populations



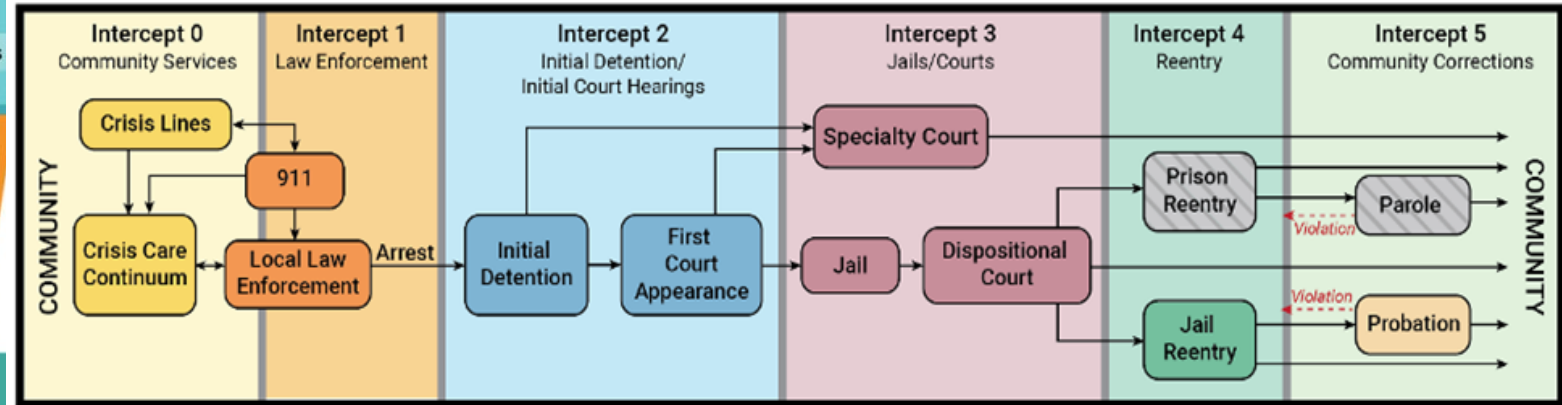
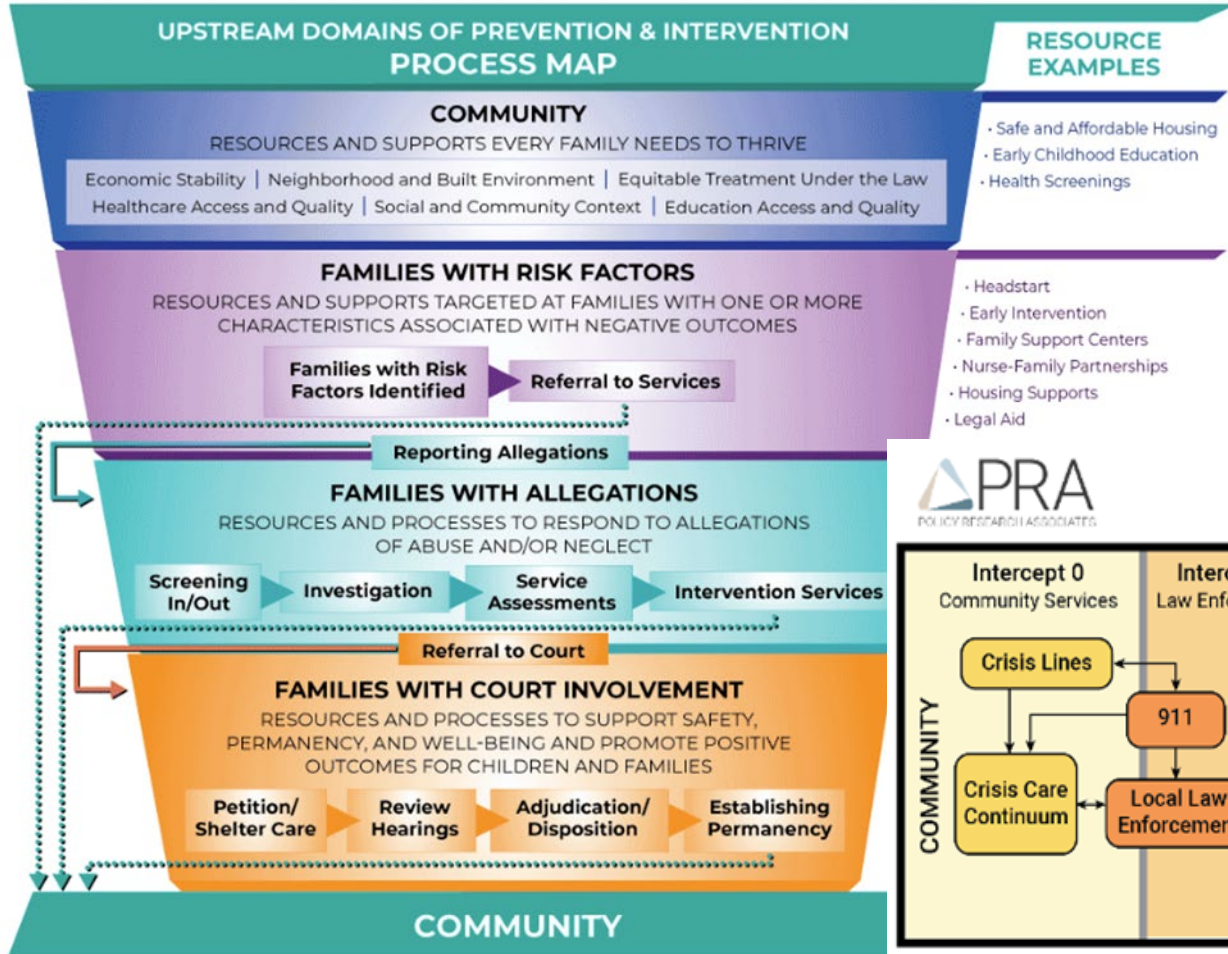
Increasing Equitable Access to Care for Co-Occurring Mental Health and Substance Use Disorders

(Gaba, Wangari Walter, Pinals 2023)

- **Highlights:**

- Although treatment guidelines recommend that people with CODs receive integrated treatment to address both substance use and mental health disorders, concurrent treatment is seldom provided in the current landscape.
- Mitigating the impact of social determinants of health plays a vital role in reducing disparities in COD access and quality of care.
- Culturally adapting evidence-based interventions and centering equitable implementation is essential for advancing health equity for priority populations.

Frameworks



National Center for State Courts

Increasing Equitable Access to Care for Co-Occurring Mental Health and Substance Use Disorders

(Gaba, Wangari Walter, Pinals 2023)

- **Recommendations for Policymakers:**

1. Prioritize and fully fund COD screening, assessment, and treatment across the age spectrum and continuum of care.
2. Prioritize and fund integrated COD treatment.
3. Fund COD stigma reduction and public awareness campaigns.
4. Require data collection to assess COD service availability as its own service or as part of mental health treatment and substance use disorder treatment programs.
5. Improve COD education and training for the workforce.
6. Assess structural barriers to COD treatment access and engagement.

Increasing Equitable Access to Care for Co-Occurring Mental Health and Substance Use Disorders

(Gaba, Wangari Walter, Pinals 2023)

- **Recommendations for Policymakers:**

7. Identify and de-implement policies, programs, and practices contributing to disparities.
8. Fund case management, navigation services, and other linkage supports to address social determinants of health needs.
9. Fund and implement evidence-informed and evidence-based programs (e.g., specialty courts) to divert youth and adults with CODs from carceral settings to community-based treatment settings.
10. Ensure Medicaid coverage at release for all Medicaid-eligible individuals released from carceral settings and other institutions such as state hospitals, and explore new opportunities for benefit coverage pre-release.
11. Provide universal screening, prevention, and treatment for opioid use disorder, spanning carceral and community settings.