

EP. 173

988 Crisis Jam

CROP: OUTREACH
TO COMMUNITIES
OF COLOR AND
MARGINALIZED
PEOPLE



Katie
Storr

Sylvia
Turner



The Congregational Recovery Outreach Program

Improving Mississippi's Mental Health

We are a community-based, grant-funded program serving Hinds County, Mississippi. The Mississippi Department of Mental Health's Bureau of Behavioral Health Services and its Division of Alcohol and Drug Addiction Treatment Services funds this program and is in partnership with the Mississippi Public Health Institute.

Our vision is to cultivate a faith-based community where love and support can be felt the most, especially when caring is simply not enough.



A photograph of a church congregation with many people raising their hands in praise. The acronym 'CROP' is overlaid in large, bold, green letters across the center of the image. The background is dark, with some stage lights visible at the top.

CROP

Congregational Recovery Outreach Program (CROP) & 988
<https://www.youtube.com/watch?v=ngfGoSNwLkU>





MISSISSIPPI MENTAL HEALTH FAITH-BASED SUMMIT 2024

Evaluation Brief



The first Mississippi Mental Health Faith-Based Summit was held on **April 24, 2024**; sponsored by **Mississippi Department of Mental Health (MSDMH)**, **Mississippi Public Health Institute (MSPHI)**, and **Congregational Recovery Outreach Program (CROP)**.



The Summit offered several activities, including a **keynote speaker** session, **panel discussion**, **networking lunch**, and **testimonial presentation**. A post-only evaluation was offered at the event's closing. **64** attendees completed the survey.

<https://talk.crisisnow.com/wp-content/uploads/2024/05/CROP-Mississippi-Mental-Health-Faith-Based-Summit-Evaluation-Brief.pdf>

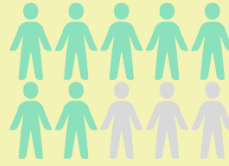
Race/Ethnicity

70% Black or African American
28% White or Caucasian
2% Native American or Alaska Native

6% 18-29 years
13% 30-39 years
11% 40-49 years
28% 50-59 years
25% 60-65 years
17% Over 65 years

Gender

77% Female



23% Male

Participant congregational affiliations

Jackson Revival Center **11%**
 New Horizon International Church **2%**
 CROP faith-based organization (Catholic Charities, Salvation Army, or Stewpot Community Services) **6%**
 No affiliation with a CROP church or faith-based organization partner **53%**
 Other **28%**



Participant roles in congregations

Senior leadership at a congregation **13%**
 Ministry or program leadership at a congregation **20%**
 Member of a congregation **23%**
 Affiliated with a faith-based organization **8%**
 Not affiliated with a congregation or faith-based organization **17%**
 Other (please specify) **19%**

Participants strongly or somewhat agreed that...

The Summit has significantly improved my understanding of mental health challenges encountered by people in my community.



The Summit has enriched my understanding of substance use challenges experienced by people in my community.



I am now more comfortable discussing mental health issues and, if needed, recommending mental health services because of this Summit.



What I learned at this Summit will benefit me in my relationships with family, friends, colleagues, and people I know.



Some attention was given to other important health challenges (e.g., HIV/AIDS, suicide risk, or COVID).



Participant congregational locations

Urban (downtown/metro areas) **16%**
 City (large, densely populated, primarily non-agricultural settlement) **38%**
 Town (larger than a village, smaller than a city) **19%**
 Suburb (outlying, residential districts of cities) **9%**
 Rural (countryside, outside of towns and cities) **16%**
 Frontier (sparsely populated areas isolated from population centers and services) **2%**
 Not a member of a faith community **2%**

Number of members in participant congregations

Less than 20 **2%**
 21-50 **11%**
 51-100 **17%**
 101-200 **13%**
 201-400 **27%**
 401-600 **6%**
 601-800 **2%**
 801-1000 **6%**
 More than 1000 **6%**
 Not a member of a faith community **2%**



92%

of participants were very satisfied with the event, and 8% were somewhat satisfied.



Support

We provide spiritual and pastoral support



Community

We provide visible outreach in the community



Recovery

We embrace and support people in recovery and walk with them

#MSPHICROP

PUTTING OUR HANDS TO THE PLOW

Our mission is help faith communities foster recovery for individuals living with substance use disorders and mental illnesses through collaborations, best practices, and education.

SCAN TO :
LEARN MORE



Thank you for taking the time to contact us :  www.MsphiCROP.org  Call us : 601-398-4406